



# HEIMAT

SELECTED WORKS FROM  
THE ALEX HANK COLLECTION

CURATED BY ANA SOKOLOFF | SOKOLOFF + ASSOCIATES, NY  
JUNE 6 - NOVEMBER 15, 2019

Inspired by the collector’s uprooting and relocation to a new environment, *Heimat* explores through a carefully crafted selection, the vulnerability of the self in displacement, the quest for finding strong emotional connections and a sense of belonging in a new land. This exhibition is the first of several undertakings that Alex Hank wants to implement as ways of exploring the concept of “homeland” in different contexts. Interweaving memories through the exhibited objects, illustrating a unique narrative of self—a glimpse into the collector’s universe, as well as different readings about contemporary art and culture that stem from one uniquely personal collection.

gstaad airport  


#HEIMATGSTAAD

WWW.TARMAK22.COM | WWW.SOKOLOFFART.COM

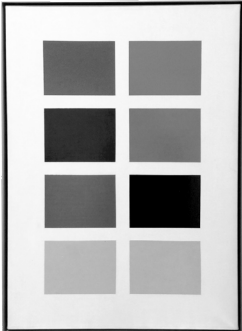
## EXHIBITION CHECKLIST



Glenn Ligon  
*Another Country*  
(After James Baldwin), 2016  
neon, metal grid  
42.5 x 107.3 cm



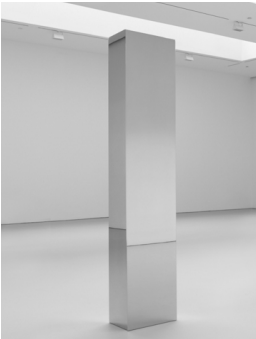
Neo Rauch  
*Lösung*, 2005  
oil on canvas  
305 x 215 x 6.5 cm



Gerhard Richter  
*Farbtafel (Color Chart)*, 1966  
lacquer on canvas  
75 x 50 cm



DeWain Valentine  
*Curved Wall Clear*, 1969  
cast polyester resin  
224.5 x 232.1 x 52.1 cm



John McCracken  
*Untitled*, 2007  
stainless steel  
254 x 50.8 x 39.5 cm



Jenny Holzer  
*Hanging*, 2014  
four-sided LED sign; RGB  
diodes  
243.8 x 15.2 x 15.2 cm



Matthew Barney  
*Cremaster 2: The Ballad of Max Jensen*, 1999  
3 color coupler prints, in  
self-lubricating plastic frames  
Left: 70.7 x 61 cm; Center: 85.5  
x 109 cm; Right: 70.7 x 60.7 cm



Alberto Giacometti  
*Dr. Fraenkel*, 1961  
bronze  
28 x 22.8 x 14.7 cm



Toba Khedoori  
*Untitled*, 2018  
oil on waxed paper  
243.8 x 335 cm

**MOVED ALONG WITH STOPS  
& STARTS & COMING TO REST  
AT A TANGENT WITH INFINITY**

Lawrence Weiner  
*Moved Along With Stops  
& Starts & Coming to Rest  
at a Tangent with Infinity*,  
2014  
language, adhesive vinyl  
119 x 389 cm



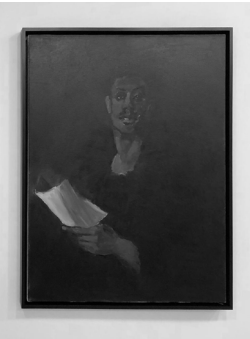
John McCracken  
*Untitled (black plank)*, 1973  
resin, plywood  
244.5 x 48.6 x 6.7 cm



Richard Serra  
*Unequal Elevations*, 1973  
hot-rolled steel, in two parts  
first block: 27.9 x 27.9 x 12.7 cm;  
second block: 30.5 x 30.5 x 13.3 cm



Philippe Parreno  
*Marquee M1535*, 2015  
transparent plexiglass  
neons and bulbs  
138.7 x 314.3 x 73.3 cm



Lynette Yiadom-Boakye  
*Nightingale*, 2009  
oil on canvas  
101 x 80 cm



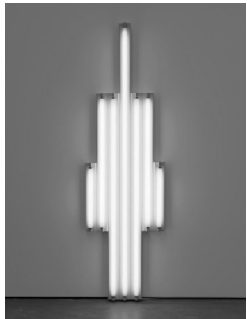
Marlene Dumas  
*The Martyr*, 2002-2004  
oil on canvas  
60 x 50 cm



Richard Serra  
*Alameda Street*, 1982  
oilstick on paper  
278.1 x 200 cm



Anne Imhof  
*Untitled*, 2019  
aluminum  
200 x 150 x 60 cm



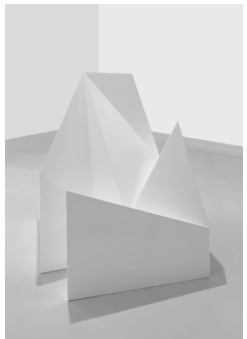
Dan Flavin  
*"monument" for V. Tatlin*, 1969-1970  
cool white fluorescent light  
244 x 71.1 x 10.2 cm



Egon Schiele  
*Self Portrait*, 1910  
watercolour and charcoal on paper  
45.2 x 30.5 cm



On Kawara  
*JAN. 4, 1990*, 1990  
acrylic on canvas  
from "Today" series,  
1966-2013 "Thursday."  
25.4 x 33 cm



Sol LeWitt  
*Complex Form # 12*, 1988  
white painted wood  
100 x 100 x 100 cm